

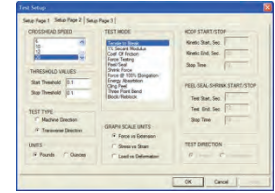
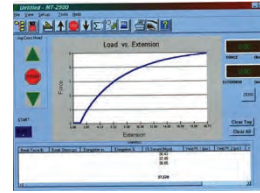
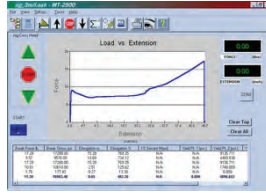


Building your MT-1500 Series Universal Tester System is as easy as "A, B, C"

A. Select Your Universal Tester Travel Height and Frame Capacity

Model	MT-1516:	MT-1522:	MT-1528	MT-1540:	MT-1552
Test Travel:	40 cm (16 inches)	56 cm (22 inches)	71 cm (28 inches)	101.5 cm (40 inches)	132 cm (52 inches)
Total Travel:	56 cm (22 inches)	71 cm (28 inches)	86.5 cm (34 inches)	117.5 cm (46 inches)	147 cm (58 inches)
Stand Capacity:	2.5 kN (550 lb)	2.5 kN (550 lb)	1.0 kN (220 lb)	2.5 kN (550 lb)	1.0 kN (220 lb)
Applications:	Low-Elongation Materials & Tests	Low/Mid-Elongation Materials & Tests	Mid-Elongation Materials & Tests	High-Elongation Materials & Tests	Very High-Elongation Materials & Tests

B. MT-2500 Software is included with the system



Computer supply by Customer or by Oakland, at your request

Software comes complete with all major film, paper and sheet test method capabilities, including: Tensile to Break, Secant Modulus, Tensile Modulus, Coefficient of Friction, Force Testing (Tensile & Compression), Peel & Seal, Shrink Force, TEA, Cling/Peel, Bending, Block/Re-block, and more.

C. Tell us your configuration preference



Front-Mounted Load Cell Mounting for Single Purpose Testing



Side-Mounted Load Cell Mounting over Work Table for Applications Testing

D. Select your Load Cell or Load Cells (if Multiple Fixtures are attached to the Universal Tester)



Series Z2-1500 Load Cell
For Standard Force Range and Standard Load Resolution
Resolution: 0.045 N (0.01 lb)
Select Force Range:
0 - 220 N (50 lb)
0 - 445 N (100 lb)
0 - 665 N (150 lb)
0 - 1100 N (250 lb)



Series ZP-1500 Load Cell
For Low Force Range and High Load Resolution
Resolution: 0.0045 N (0.001 lb)
Select Force Range:
0 - 10 N / 1000 g (2.2 lb)
0 - 45 N / 4500 g (10 lb)

E. Select your Calibration Weights to match your load cell(s)



5lb and 10 lb Calibration Weights and Weight Hook
Recommended if you prefer to perform in-house calibrations on your Universal Tester or are changing load cells (load capacities) for multiple application testing. Calibration weights should weigh at least 12% of maximum load cell capacity.



5 and 10 lb Calibration Weights in Daisy Chain Configuration

F. Select your Pneumatic Grips and Air Control Box



Large



Small



Tissue



Pneumatic Control Switches

Or your Mechanical grips for Single-purpose testing



Wedge



Parallel Jaw



Sheet



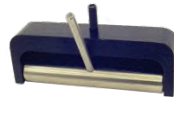
Thin Film



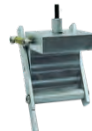
Pin Vise



Cable Cam



Lever



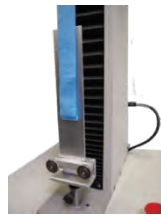
Spring Loaded Roller



Filament

G. Or select your fixtures for application testing

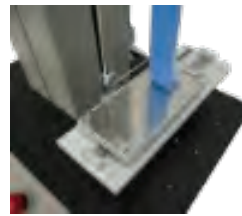
While designed for tensile testing of strip samples, the MT-1500 Series can accommodate several fixtures.



180° Peel



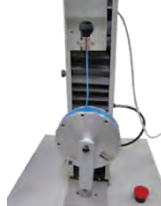
90° Peel, Non-Synchronized



90° Peel, Synchronized



90° Peel, Synchronized



Rotary Peel



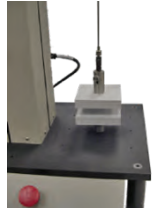
3-Point Bend



Coefficient of Friction



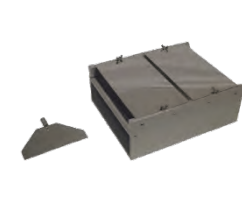
Cling Peel



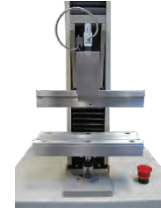
Blocking



Puncture



Fabric Stiffness



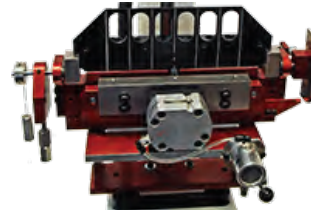
Film Rigidity



Shrink Force



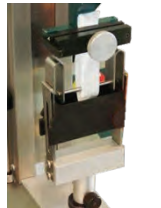
Tubing Friction



Score Bend



Score Quality



Finch Cup Wet Tensile



Loop Tack



Environmental Chamber



Custom Inserts

Contact Plastics Touchpoint Group for assistance when selecting components to customize your tensile tester

Ordering Information



Distributed by:
 Plastics Touchpoint Group, Inc.
 152 Rimmington Drive
 Thornhill, Ontario, Canada, L4J 6K1
 Tel: 416-788-9742
 Email: info@plasticstouchpoint.com
 Website: www.plasticstouchpoint.com

BRO MT-1500CONFIGURATION-1120C
 Manufactured by:
 Oakland Instrument Corp.
 5220 12th Avenue East
 Shakopee, Minnesota 55379 USA

Website: www.oaklandinstruments.com