



Building your MT-2500 Tensile Tester System is as easy as "A, B, C"

A. Select Your Tensile Tester Travel Height and Frame Capacity



Model MT-2521:
 Test Travel: 36.8 cm (14.5 inches)
 Total Travel: 54.6 cm (21.5 inches)
 Stand Capacity: 4.45 kN (1000 lb)
 Applications: Low-Elongation Materials & Tests



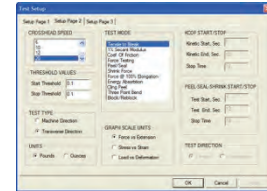
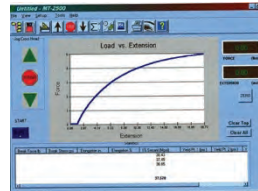
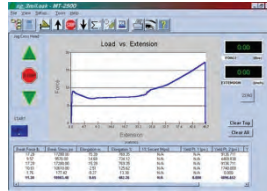
Model MT-2533:
 Test Travel: 67.3 cm (26.5 inches)
 Total Travel: 85.1 cm (33.5 inches)
 Stand Capacity: 2.2 kN (500 lb)
 Applications: Mid-Elongation Materials & Tests



Model MT-2545:
 Test Travel: 97.0 cm (38.2 inches)
 Total Travel: 115 cm (45.2 inches)
 Stand Capacity: 1.1 kN (250 lb)
 Applications: High-Elongation Materials & Tests

B. MT-2500 Quality Control Software is Included with System

Computer supply by Customer or by Oakland, at your request



Software comes complete with all major film, paper and sheet test method capability, including: Tensile to Break, Secant Modulus, Tensile Modulus, Coefficient of Friction, Force Testing (Tensile & Compression), Peel & Seal, Shrink Force, TEA, Cling/Peel, Bending, Block/Re-block, and many more.

C. Load Cell (1) is included with system

Select Load Cell force range for your application



Series Z2-1500 Load Cell
 For Standard Force Range and Standard Load Resolution
 Resolution: 0.045 N (0.01 lb)
 Select Force Range:
 0 – 220 N (50 lb)
 0 – 445 N (100 lb)
 0 – 665 N (150 lb)
 0 – 1100 N (250 lb)



Series ZP-1500 Load Cell
 For Low Force Range and High Load Resolution
 Resolution: 0.0045 N (0.001 lb)
 Select Force Range:
 0 – 10 N / 1000 g (2.2 lb)
 0 – 45 N / 4500 g (10 lb)

D. Select your Calibration Weights to match your load cell(s)



5lb and 10 lb Calibration Weights and Weight Hook



5 and 10 lb Calibration Weights in Daisy Chain Configuration

Recommended if you prefer to perform in-house calibrations on your Universal Tester or are changing load cells (load capacities) for multiple application testing. Calibration weights should weigh at least 12% of maximum load cell capacity.

E. Select your Pneumatic Grips and Air Control Box

Or your Mechanical grips for Single-purpose testing



Large



Small



Tissue



Pneumatics



Wedge



Parallel Jaw



Sheet



Thin Film



Lever



Spring Loaded Roller



Building your MT-2500 Tensile Tester System is as easy as "A, B, C"

F. Consider Specialty Grip Inserts for unique testing requirements



Radiused Inserts

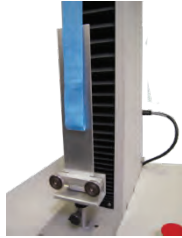


Custom Inserts

1% Secant Modulus for Plastic Film, Peel/Seal testing for film, sheet and other applications

G. Or select your fixtures for application testing

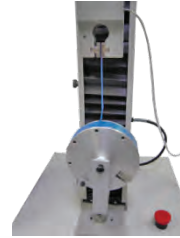
While designed for tensile testing of strip samples, the MT-2500 Series can accommodate several fixtures with a 5 cm (2 inch) centerline distance to the back of the fixture.



180° Peel



Peel / Seal, T-Peel



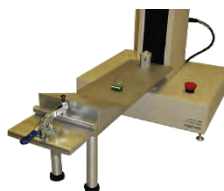
Rotary Peel



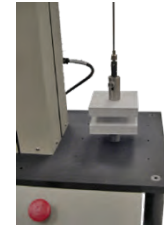
3-Point Bend



Coefficient of Friction



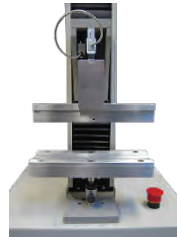
Cling Peel



Blocking



Puncture



Film Rigidity



Tubing Friction



Finch Cup Wet Tensile



Loop Tack

Contact Plastics Touchpoint Group for assistance when selecting components to customize your tensile tester

Ordering Information



Distributed by:
Plastics Touchpoint Group, Inc.
152 Rimmington Drive
Thornhill, Ontario, Canada, L4J 6K1
Tel: 416-788-9742
Email: info@plasticstouchpoint.com
Website: www.plasticstouchpoint.com

BRO MT-2500CONFIGURATION-1120C
Manufactured by:
Oakland Instrument Corp.
5220 12th Avenue East
Shakopee, Minnesota 55379 USA

Website: www.oaklandinstruments.com