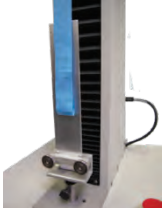


Compatible with:



Fixtures, General – Page 1

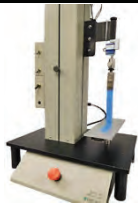
PEEL TEST FIXTURE, 180 DEGREE, ASTM D-903



- Conforms with ASTM D-903 Peel or Stripping Strength of Adhesive Bonds
- Specify sheet metal plates if required
- Upper grip required to complete fixture package is not included
- Requires crosshead speed of 305 mmpm (12 ipm)
- Photo shows 51 mm (2 in) wide x 3.18 mm (0.125 in) thick x 254 mm (10 in) high brushed aluminum back plate fixture



PEEL TEST FIXTURE, 90 DEGREE, NON-SYNCHRONIZED



- Suitable for testing tapes, adhesives and laminates
- Metal face travels perpendicular to crosshead
- For forces > 44 N (4300 gf / 10 lbf)
- Upper grip required to complete fixture package is not included
- Includes plated steel Mounting Base, Slide and anodized aluminum Table Mounting Plate, anodized aluminum Peel Table Width x Length by Thickness 100 x 300 x 6 mm (4 x 12 x 0.25 in)



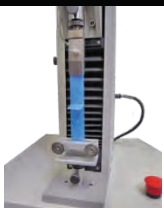
PEEL TEST FIXTURE, 90 DEGREE, SYNCHRONIZED



- Suitable for testing tapes, adhesives and laminates
- Upper grip required to complete fixture package is not included
- Metal face travels perpendicular to crosshead
- For forces > 44 N (4300 gf / 10 lbf)
- For forces < 44 N (4300 gf / 10 lbf), add cable pulley, cable bracket and spring return (not shown in photograph)
- Includes mounting Adaptor Plate, Base, Slide, Peel Table with 2 sample Mounting Clamps and integral table return Spring, Cable Pulley/Bracket and cable -end Adaptor to synchronize horizontal Peel Table movement with crosshead Mounting Bracket



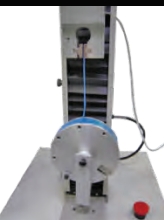
PEEL/SEAL TEST FIXTURE, T-PEEL OR SEAL, RUBBERIZED FACE



- Rubberized mounting faces 51 mm (2.0 in) wide x 13 mm (0.5 in) high
- Upper grip required to complete fixture package is not included



ROTARY PEEL TEST FIXTURE



- One fixed sample clamp (serrated)
- One moveable sample clamp (matches face radius)
- 15.25 cm (6.00 in) diameter x 3.8 cm (1.50 in) face width



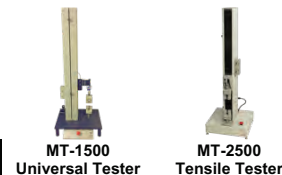
3-POINT BENDING TEST FIXTURE, ASTM F-1575



- Conforms with ASTM F-1575 Determining Bending Moment of Nails
- Includes upper and lower 3-point bending fixtures with 9.5 mm (3/8") diameter cylindrical bearing points
- Adjustable length between bearing points
- Bearing point range 28 – 56 mm (1.1 – 2.2 in)
- Requires crosshead speed of 6.35 mmpm (0.25 ipm)
- Upper grip required to complete fixture package is not included



Compatible with:



Fixtures, General – Page 2

COEFFICIENT OF FRICTION TEST FIXTURE, ASTM D-1894, TAPPI T-549



- Conforms to ASTM D-1894 Static and Kinetic Coefficient of Friction of Plastic Film and Sheet
- Conforms to TAPPI T-549 Coefficient of Static and Kinetic Friction of Uncoated Writing and Printing Paper by Use of Horizontal Plane Method
- Includes 200 gram weight with attachment wire, carrier sled attachment with pulley
- Requires crosshead speed of 15.3 mmpm (6.0 ipm)
- Upper grip required to complete fixture package is not included



CLING PEEL TEST FIXTURE, ASTM D-5458



- Conforms to ASTM D-5458 Peel Cling of Stretch Wrap Film
- Includes inclined plane fixture, COF carrier sled with pulley, sample clamp, wire and stabilizing legs
- Requires crosshead speed of 127 mmpm (5.0 ipm)
- Upper grip required to complete fixture package is not included.



BLOCKING TEST FIXTURE, ASTM D-3354



- Conforms to ASTM D-3354 Blocking Load of Plastic Film by the Parallel Plate Method Procedure B Using Constant Rate of Separation Test Device
- Includes two 100 mm x 100 mm (4 in x 4 in) blocks
- Requires crosshead speed of 5 mmpm (0.2 ipm)
- Recommended for mid to upper range blocking force (> 50 g force)
- Upper grip required to complete fixture package is not included



PUNCTURE TEST FIXTURE, PNEUMATIC CLAMP, FEDERAL METHOD 101B/C



- Conforms to Federal Test Method 101B and 101C Puncture Resistance of Flexible Packaging and Industrial Fabric
- Includes puncture test fixture with pneumatic sample clamp, air control unit and pressure regulator
- 25 mm (1 in) diameter sample area
- 6.4 mm (¼ in) diameter radiused rod tip
- Requires crosshead speed of 25 mmpm (1.0 ipm)



PUNCTURE TEST FIXTURE, PNEUMATIC CLAMP, ASTM F-1306



- Conforms to ASTM F-1306 Slow Rate Penetration Testing of Barrier Films and Laminates
- Includes puncture test fixture with pneumatic sample clamp, air control unit and pressure regulator
- 35 mm (1- 3/8 in) diameter sample area
- 3.2 mm (1/8 in) diameter radiused rod tip
- Requires crosshead speed of 25 mmpm (1.0 ipm)



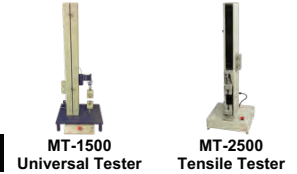
PUNCTURE TEST FIXTURE, MANUAL CLAMP, ASTM D-5748



- Conforms to ASTM D-5748 Protrusion Puncture Resistance of Stretch Wrap Film
- Puncture test fixture with manual sample clamp
- 101 mm (4.00 in) diameter sample area
- 19 mm (0.75 in) diameter radiused Teflon™ coated rod tip
- Requires crosshead speed of 254 mmpm (10.0 ipm)



Compatible with:



Fixtures, General – Page 3

PUNCTURE TEST FIXTURE, PNEUMATIC OR MANUAL CLAMP, FABRIC, EN 388



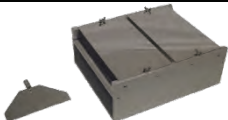
- Conforms to EN 388 Puncture Test Fixture for Fabric Testing
- 20.25 mm (0.797 in) diameter sample area
- 1 mm (0.04 in) diameter radiused rod tip with 30° included angle tip

PUNCTURE TEST FIXTURE, PNEUMATIC OR MANUAL CLAMP, FABRIC, ASTM F-1342



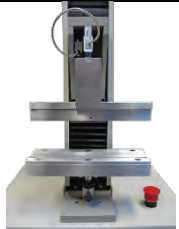
- Conforms to ASTM F-1342 Puncture Test Fixture for Fabric Testing
- 6.4 mm (¼ in) diameter sample area
- 51 mm (2 in) long rod with 2.03 mm (0.08 in) diameter
- 0.25 mm radiused tip with 26° included angle

FABRIC STIFFNESS / SLOT TEST FIXTURE, ASTM D-6828



- Conforms to ASTM D-6828 Standard Test Method for Stiffness of Fabric by Blade / Slot Procedure
- Measures force required to push a specimen into a slot of fixed width
- Includes slot fixture and sample holder

FILM RIGIDITY TEST FIXTURE, ASTM D-2923, POLYOLEFIN FILM AND SHEET



- Conforms to (interpreted) ASTM D-2923 Rigidity Fixture for Polyolefin Film and Sheet
- Measures force required to push a specimen into a slot of fixed width
- Includes alignment block (not shown)
- 3.2 mm (0.125 in) wide blade
- 6.4 mm (0.250 in) wide slot
- 25.4 cm (10.0 in) slot length
- Requires crosshead speed of 254 mppm (10.0 ipm)

SHRINK FORCE TEST HEATING CHAMBER - RETRACTABLE



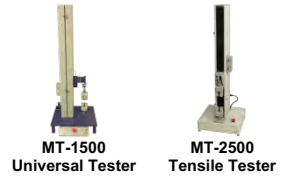
- Air driven retractable chamber
- Temperature range: 60 - 150°C (140 - 300°F)
- Sample test area H x W: 50 mm (2 in) x 25 mm (1 in)
- Requires crosshead set in stationary (stopped) mode

TUBING FRICTION TEST FIXTURE



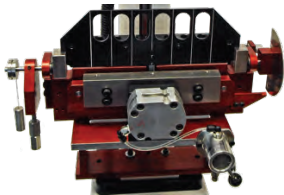
- Submersible tray for securing tube samples
- Machined water bath pan
- Temperature control console for water bath heaters
- 21 – 43°C (70° – 110°F) temperature range
- Ports (2) for addition of water recirculation system
- Requires crosshead speed of 152 mpm (6.0 ipm)

Compatible with:



Fixtures, General – Page 4

SCORE BEND TEST FIXTURE FOR CORRUGATED CONTAINERS, TAPPI T-557



- Conforms to TAPPI T-557 Standard Test Method for Score Bend Testing
- Score bend fixture for 90° score bend testing of cardboard, fiberboard and laminates
- 5,000 g (11 lb) load cell, standard
- 2,500 g (5.5 lb) or 10,000 g (22 lb) load cell as option
- 330 mpm (13 ipm) speed (programmable 13 – 330 mpm (0.5 - 13 ipm))
- Sample width to 152 mm (6 in), up to 305 mm (12 in) as option



SCORE QUALITY TEST FIXTURE FOR CORRUGATED CONTAINERS, TAPPI T-829



- Conforms to TAPPI T-829 Standard Test Method for Score Quality Testing
- U-shaped channel width: 27 mm (1.06 in)
- Edge radius 0.25 mm (0.01 in)
- Pressure bar radius 0.13 mm (0.005 in)
- Requires crosshead speed of 48.0 mmpm (1.89 ipm)



FINCH CUP WET TENSILE STRENGTH TEST FIXTURE, PAPER, ASTM D-824, TAPPI T-456



- Conforms to TAPPI T-456 and ASTM D-824 Wet Tensile Strength Test for Paper
- Finch cup inside dimensions:
 - Width 31.8 mm (1.25 in)
 - Length 57.2 mm (2.25 in)
 - Diameter 38.1 mm (1.50 in)
- Support arm: diameter 6.4 (0.25 in), Length 51 mm (2.00 in)



LOOP TACK TEST FIXTURE, EN-1719



- Conforms to EN-1719 Pressure Sensitive Adhesive Test for Polyester Films and Paper



ENVIRONMENTAL CHAMBER



- Fixed position chamber for testing at elevated temperatures
- Maximum temperature: 280°C (535°F)
- Forced convection heating method
- Heating Power: 2300 W (220 VAC)
- Minimum temperature: -80°C (-110°F) to Ambient
- Cooling Requires Liquid Nitrogen
- Optional Door Light and Internal Light
- Internal dimensions H x W x D:
 - 500 mm x 200 mm x 200 mm
 - 20 in x 8 in x 8 in



Ordering Information



Distributed by:
 Plastics Touchpoint Group, Inc.
 152 Rimmington Drive
 Thornhill, Ontario, Canada, L4J 6K1
 Tel: 416-788-9742
 Email: info@plasticstouchpoint.com
 Website: www.plasticstouchpoint.com

BRO TENSILEFIXTURES-1120C
 Manufactured by:
 Oakland Instrument Corp.
 5220 12th Avenue East
 Shakopee, Minnesota 55379 USA

Website: www.oaklandinstruments.com