



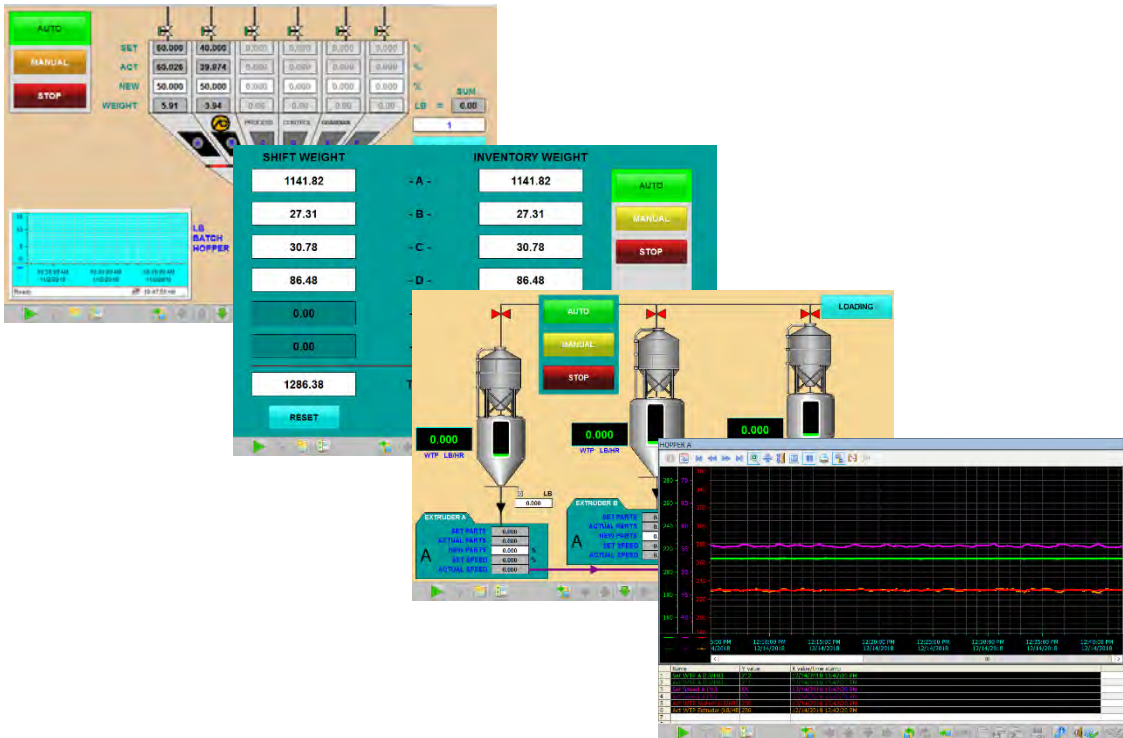
PROCESS CONTROL

Auxiliary Equipment for the Plastics Processing Industry

PCC

Process Manager

- **The right information**
- **Right where you want it**
- **Right when you need it**



PROCESS CONTROL CORPORATION

World Headquarters

6875 Mimms Drive, Atlanta, GA 30340 USA

Ph 770.449.8810 Fax 770.449.5445

Process Control GmbH

Industrie Strasse 15, 63633 Birstein, Germany

Ph +49-6054-91290 Fax +49-6054-9129-99



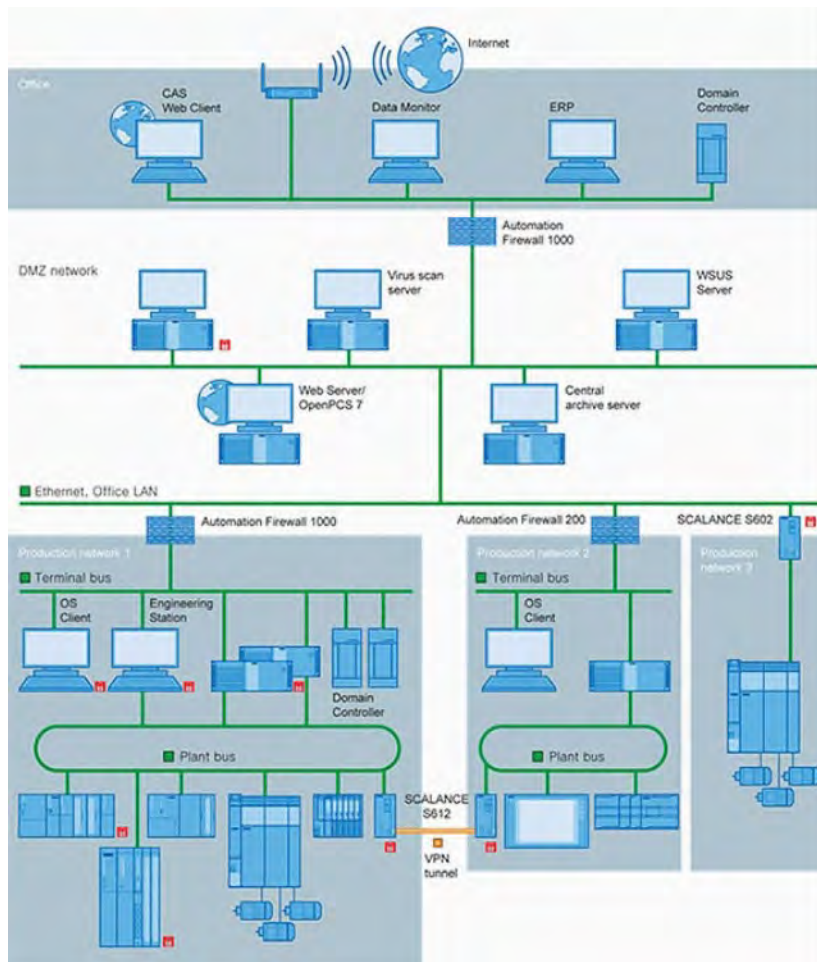
PROCESS CONTROL

Auxiliary Equipment for the Plastics Processing Industry

PCC Process Manager is a PC or server-based Supervisory Control And Data Acquisition (SCADA) system designed to maximize the value and efficiency of your PCC blenders and related equipment.

PCC Process Manager is flexible and scalable. Control and monitor one blender, an entire line, or the entire plant.

Start small, if you want, and expand as you go without having to replace the software but merely add on to it. Start with PCC Process Manager on one standard PC, server, or industrial-grade touchscreen. Expand to a client/server arrangement. Add multiple clients. Add a web server option that automatically publishes the SCADA screens as web pages. Add a second server for high availability – if one server needs to be shut down for maintenance or upgrades, the clients will automatically switch to the other server, and back and forth as needed for 100% uptime.



PROCESS CONTROL CORPORATION

World Headquarters

6875 Mimms Drive, Atlanta, GA 30340 USA
Ph 770.449.8810 Fax 770.449.5445

Process Control GmbH

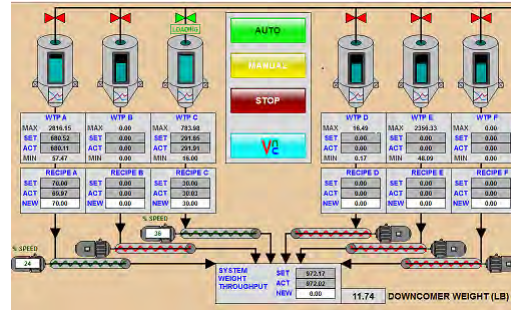
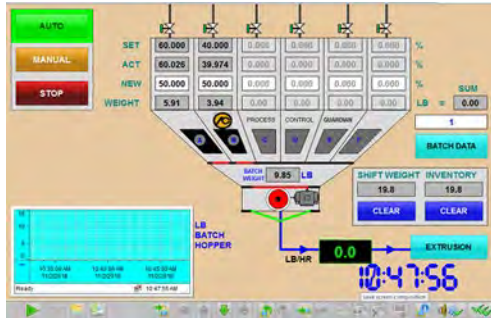
Industrie Strasse 15, 63633 Birstein, Germany
Ph +49-6054-91290 Fax +49-6054-9129-99



PROCESS CONTROL

Auxiliary Equipment for the Plastics Processing Industry

PCC Process Manager uses established well-known industry standard protocols, making it possible to communicate with not just PCC equipment but also other equipment that uses these protocols.

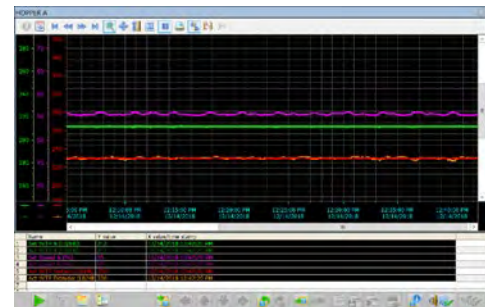


PCC Process Manager can be used to control the blender or just to monitor and report. Operator permissions can be as fine-grained as you want. Control access to an entire screen or to individual buttons and fields.

PCC Process Manager includes extensive data collection, logging, and trending capabilities. Just about any data point on the blenders can be logged and stored for up to a year. This data can be trended historically. Zoom in to the trend for minute detail, zoom out for the big picture. Export the data to other programs such as Excel™, or connect the PCC Process Manager database to other MES, MRP, or historian systems.



View and report shift and inventory weights



Trending of current and historical data

Batch Number	Hopper A - Crystal	Hopper Weight B	Hopper Weight C	Hopper Weight D	Batch Total Weight
1	183	4.48	0	5.47	4.88
2	185	4.47	0	5.47	9.88
3	188	4.48	0	5.45	5.48
4	190	4.47	0	5.48	-1.1
5	193	4.44	0	5.43	4.52
6	194	4.41	0	5.39	-1.8
7	196	4.45	0	5.45	9.88
8	199	4.46	0	5.45	4.82
9	202	4.44	0	5.43	5.8
10	203	4.4	0	5.38	5

Batch data as exported and viewed in Excel



PROCESS CONTROL CORPORATION

World Headquarters
6875 Mimms Drive, Atlanta, GA 30340 USA
Ph 770.449.8810 Fax 770.449.5445

Process Control GmbH
Industrie Strasse 15, 63633 Birstein, Germany
Ph +49-6054-91290 Fax +49-6054-9129-99



PROCESS CONTROL

Auxiliary Equipment for the Plastics Processing Industry

The PCC Process Manager basic package includes:

- Software to be installed on your PC, Server, or Virtual machine (We support *VMWare™* and *Oracle Virtualbox™*). Supported operating systems are Windows 10 LTSC, Server 2012 R2, and Server 2016
- Screens to match the PCC equipment shipped with the same order or prior orders as agreed upon.
- Trending set up per spec.
- Tag archiving set up per spec. Archive period can range from 1 week to 1 year.
- A report generator similar to *Crystal Reports* that can be used to create custom reports.
- Initial configuration and startup and training via remote *TeamViewer™* connection.

Possible options include but are not limited to:

- Custom screens to match the “look and feel” of existing equipment as closely as possible (within copyright and/or technical constraints) or to include existing or third party equipment.
- Custom reports created by PCC for your site.
- Client/Server, Server Redundancy, Web Server, Multi-clients, Industrial touchpanels.
- On-site support or training or remote support after the initial startup has been accepted.



PROCESS CONTROL CORPORATION

World Headquarters

6875 Mimms Drive, Atlanta, GA 30340 USA
Ph 770.449.8810 Fax 770.449.5445

Process Control GmbH

Industrie Strasse 15, 63633 Birstein, Germany
Ph +49-6054-91290 Fax +49-6054-9129-99