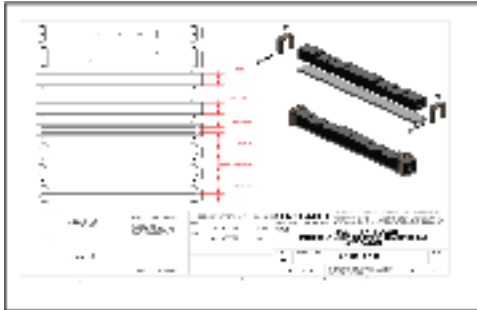




Model 12ASL/1 Heat Seal Tester with Pneumatic Hot Bar Clamp and Footswitch Activated Testing



Quick –Change Sealing Bar Dies available in a wide range of sizes.

**Oakland Instrument Corp.**

Oakland Instrument Corp. specializes in the design, manufacture and distribution of test, measurement and control systems for the plastics, flexible packaging, and paper industries.

**Customer-Driven**

We team with our customers to help them solve their quality and process-control problems.

**Technology-Based**

Our applications knowledge and engineering depth allow us to offer both standard and custom systems based on industry leading technology.

# Models 12 AS/1 & 12 ASL/1 Heat Seal Testers – Factory Refurbished with Quick-Change Sealing Bar Dies

Full-Featured Laboratory Heat Sealers for Film and Sheet

Oakland Instrument offers the Models 12 AS/1 and 12 ASL/1, simple to use stand-alone, instruments for measuring heat sealing properties of film, sheet, and laminated materials.

**Improved Film and Sheet Quality, Increased Profit Margins**

Models 12 AS/1 and 12 ASL/1 Heat Seal Testers are proven tools for more closely controlling nominal heat sealing characteristics to speed your:

- Production and additives settings and adjustments
- Research and development of new film and sheet products
- Inspection of incoming film and sheet products
- In-process checks to ensure on-spec product for converting operations

**The Oakland Advantage**

**Conforms to ASTM Standard**

Conforms to ASTM F88/F88M-15 Seal Strength of Flexible Barrier Materials and ASTM F2029-16 Making Laboratory Heat Seals for Determination of Heat Sealability of Flexible Barrier Materials as Measured by Seal Strength.

**Advanced Technical Features in Each Model**

Interchangeable Sealing Bar Dies / Jaws

Oakland’s quick-change sealing Bar Jaws allow heat seals in a wide range of widths including cold seal options.

Easy, Manual or Footswitch-assisted Operation

Two versions of operation available: Operate as a manual system or with footswitch-assist for hot bar sample clamping.

Flexible Operation for Heat Seal Testing

The 12 AS/1 is a constant-heat style bar sealer with fully adjustable digital heating timer, digitally-adjustable seal-bar pressure and adjustable, individual, temperature controlled upper sealing bar.

The 12 ASL/1 is a constant-heat style bar sealer with fully adjustable digital heating timer, digitally-adjustable seal-bar pressure and adjustable, individual, temperature controlled upper and lower sealing bars.

Affordable

Best of all, the Models 12AS/1 and 12ASL/1 are economically priced.

Extended Warranty Included

Factory Refurbished by Oakland Instrument Corporation with a 2-Year Parts and Labour Warranty.

## Specifications

### Model 12 AS/1

### Model 12 ASL/1

Type:	Upper Constant Heat Sealing Bar	Upper & Lower Constant Heat Sealing Bars
Interchangeable Dies	Upper Interchangeable Dies	Upper and Lower Interchangeable Dies
Number of Zones:	Single-zone design	Single-zone design
Sealing Bars:	Upper heating bar with digital temperature controller	Upper & Lower heating bars with independent digital temperature controllers
Standard Seal Area:	305 x 25.4 mm (12 x 1.000 in.)	305 x 25.4 mm (12 x 1.000 in.)
Upper Sealing Bar Seal Area Options:	305 x 12.7 mm (12 x 0.500 in.) 305 x 9.53 mm (12 x 0.375 in.) 305 x 6.35 mm (12 x 0.250 in.) 305 x 3.18 mm (12 x 0.125 in.) Teflon™ coated	305 x 12.7 mm (12 x 0.500 in.) 305 x 9.53 mm (12 x 0.375 in.) 305 x 6.35 mm (12 x 0.250 in.) 305 x 3.18 mm (12 x 0.125 in.) Teflon™ coated
Sealing Temperature Range:	21 to 250°C (70 to 482°F)	21 to 250°C (70 to 482°F)
Countdown Timer:	Digital timer	Digital timer
Temperature Control:	Surface mounted thermocouples Digital temperature controller	Surface mounted thermocouples Digital temperature controller
Actuation:	Dual action cylinder Pneumatic, upper sealing bar	Dual action cylinder Pneumatic, upper sealing bar
Test Activation:	Electronic timer activation or footswitch activation Footswitch included	Electronic timer activation or footswitch activation Footswitch included
Remote Monitoring Outputs:		
Temperature:	(6) Button-selectable outputs	(6) Button-selectable outputs
Seal Time:	(1) Switch closure output	(1) Switch closure output
Pressure:	(1) Air connection for remote monitoring	(1) Air connection for remote monitoring
Sealing Pressure Range:	0.34 to 4.1 bars (5 to 60 psig)	0.34 to 4.1 bars (5 to 60 psig)
Power Requirements:	110 Volts, 60 Hz, 230 VAC Consult factory for options	110 Volts, 60 Hz, 230 VAC Consult factory for options
Full Load Current:	8 Amp	8 Amp
Interrupting Capacity:	10 Amp	10 Amp
Dimensions (W x D x H):	39 x 50 x 57 cm (15.5 x 19.5 x 22.5 in.)	39 x 50 x 57 cm (15.5 x 19.5 x 22.5 in.)
Weight:	41 kg (90 lbs)	41 kg (90 lbs)

(Due to continuous product improvement, all specifications are subject to change without notice.)

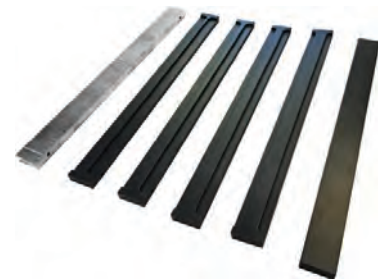
#### OPTIONS:

##### Quick Change Upper Heated Sealing Bar

Sizes:	305 x 3.18 mm (12 x 0.125 in.)
	305 x 6.35 mm (12 x 0.250 in.)
	305 x 9.53 mm (12 x 0.375 in.)
	305 x 12.7 mm (12 x 0.500 in.)
	305 x 25.4 mm (12 x 1.000 in.)

##### Quick Change Upper Cold Seal and Standard Lower Seal Bars

Serrations	1.27 x 0.762 mm (0.05 x 0.03 in.)
Size:	305 x 25.4 mm (12 x 1.000 in.)



Quick Interchangeable Upper Heat Seal Bars

#### Ordering Information



Distributed by:  
Plastics Touchpoint Group, Inc.  
152 Rimmington Drive  
Thornhill, Ontario, Canada, L4J 6K1  
Tel: 416-788-9742  
Email: [info@plasticstouchpoint.com](mailto:info@plasticstouchpoint.com)  
Website: [www.plasticstouchpoint.com](http://www.plasticstouchpoint.com)

BRO 12AS/1 & 12ASL/1-0122C  
Manufactured by:  
Oakland Instrument Corp.  
5220 12<sup>th</sup> Avenue East  
Shakopee, Minnesota 55379 USA

Website: [www.oaklandinstruments.com](http://www.oaklandinstruments.com)